



# Retroreflective powder coating

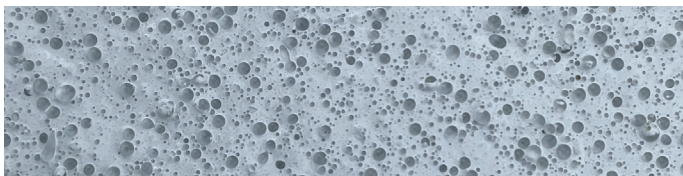


## Introducing PPG ENVIROCRON® LUM retroreflective powder coating

PPG's newest powder innovation was developed in one of our state-of-the-art R&D labs, but the genesis of PPG *Envirocron* LUM powder is rooted in nature and inspired by the reflective eyes of deer.

This patent-pending retroreflective powder, the world's first, was created after PPG scientists found a way to embed reflective glass beads at the surface of a powder coating to reflect maximum light back to its source.

In addition to its safety enhancing features, the formulation provides all the benefits you expect from PPG powder, including resistance to corrosion, chipping and abrasion.



### Coating surface magnified x 50

Tiny glass beads are embedded in the surface of the powder film, reflecting light

### The PPG Benefit



Innovative embedded glass beads provide retroreflective properties



Exterior durability and chemical resistance



Low matte finish aids retroreflective properties of glass beads



Available in a wide range of colors

### Suggested markets

General industrial

Automotive parts and accessories

### Suggested end uses

Bicycles and scooters

Guardrails

Poles and fencing

Safety equipment

Tools

Shopping carts

ATVs



Uncoated guardrail



Envirocron LUM-coated guardrail\*

## PPG Envirocron® LUM



### Product Characteristics

Chemistry	Polyester urethane
Color	Wide range of colors
Gloss @ 60° (ASTM D523)	1-8
Recommended Bake	10 minutes at 400° F (204° C) metal temperature
Substrate	Aluminum, steel and other metal substrates

### Performance Properties

Adhesion (ASTM D3359)	5B
Hardness (ASTM D3363)	2H minimum
Flexibility, Conical Mandrel (ASTM D522)	1/4" - no cracking
Impact Resistance (ASTM D2794)	Direct: 40 in./lbs. Indirect: 40 in./lbs.
Salt Spray Resistance (ASTM B117)	1,000 hours, 5% salt spray @ 95° F (35° C),
Humidity Resistance (ASTM D1735)	1,000 hours, 100% relative humidity @ 100° F (38° C)

Film properties were determined using 2.0-3.0 mils powder film over 22-gauge (0.032") cold-rolled steel B1000 test panels

\* Conceptual illustration.

This document contains general information only and should not be construed as creating any warranties, express or implied. Please contact a PPG representative for additional information.

The PPG Logo, We protect and beautify the world and Envirocron are registered trademarks of PPG Industries Ohio, Inc. The IN Logo is a registered trademark of LinkedIn Corporation. Lyft is a registered trademark of Lyft, Inc. Lyft photo used with permission. ©2022 PPG Industries, Inc. All rights reserved. 03/22 IC216

